

CENTRAL OKANAGAN'S

VitalSigns[®]

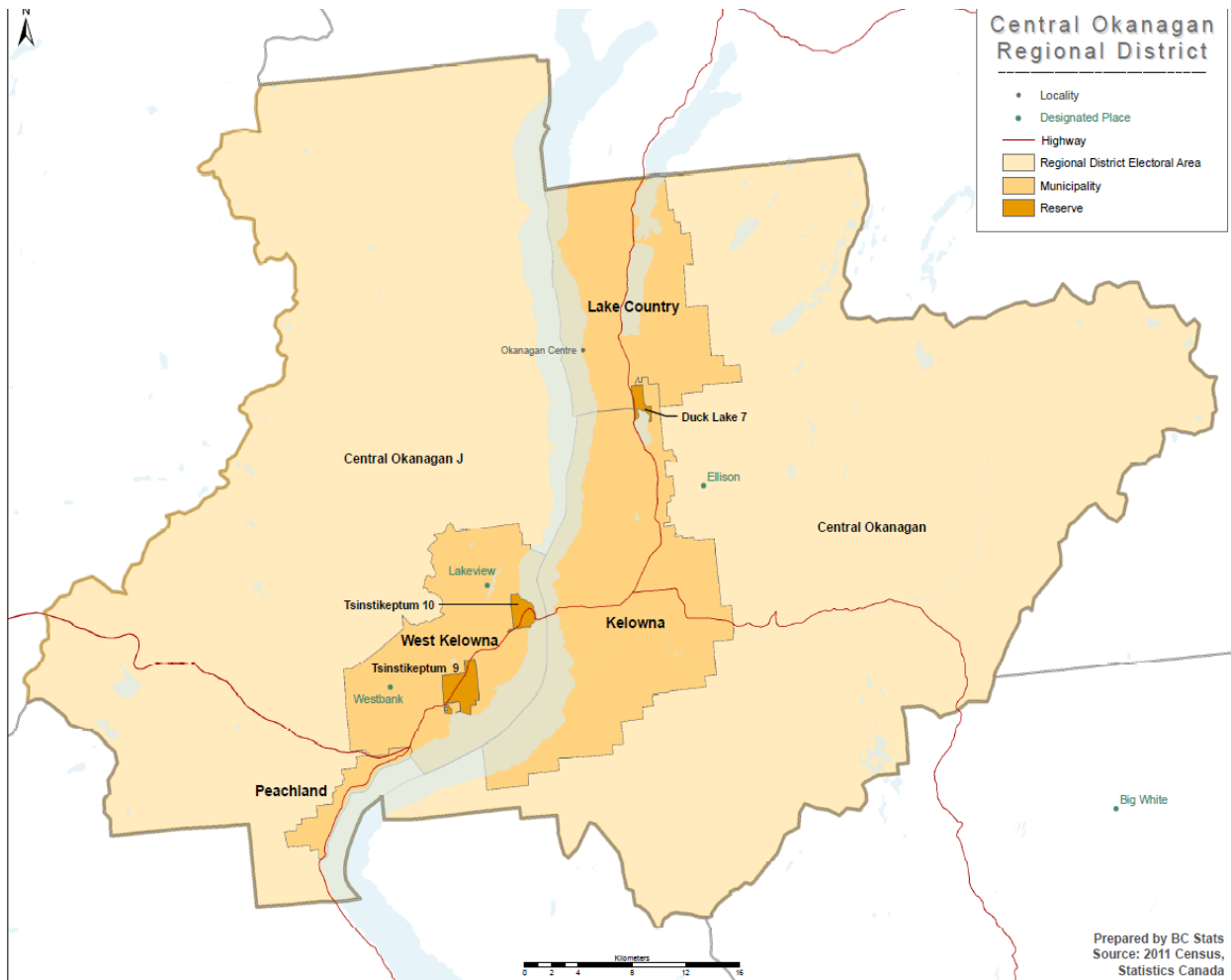
2015 INDICATOR DATA AND SOURCES

CENTRAL OKANAGAN'S

VitalSigns®

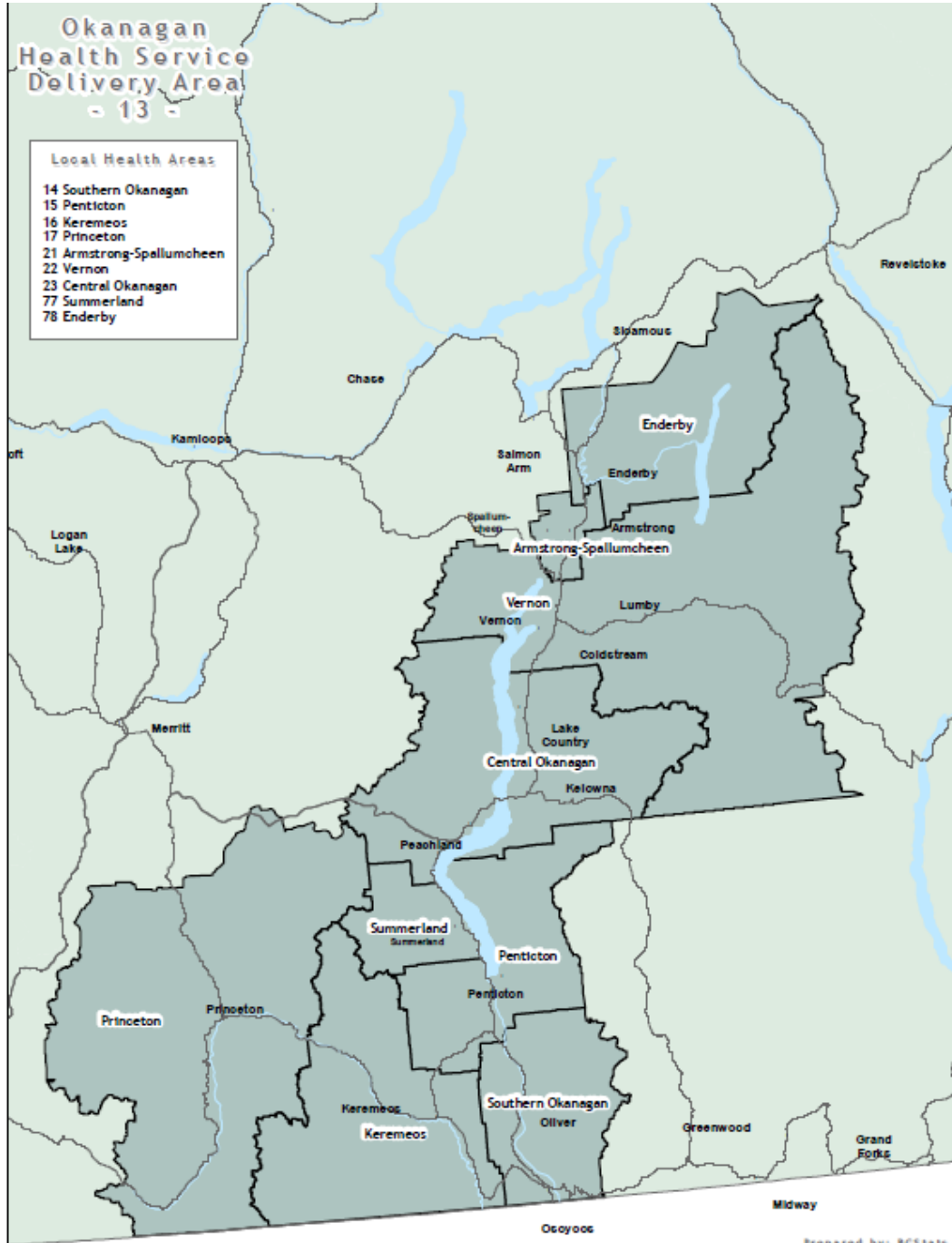
For each indicator, the most *current* statistics, from the most *reliable* sources, were used.

In most cases, data represents the Kelowna Census Metropolitan Area (CMA) which includes Peachland, West Kelowna, Westbank First Nation, Kelowna, and Lake Country, as well as the Regional District of the Central Okanagan.



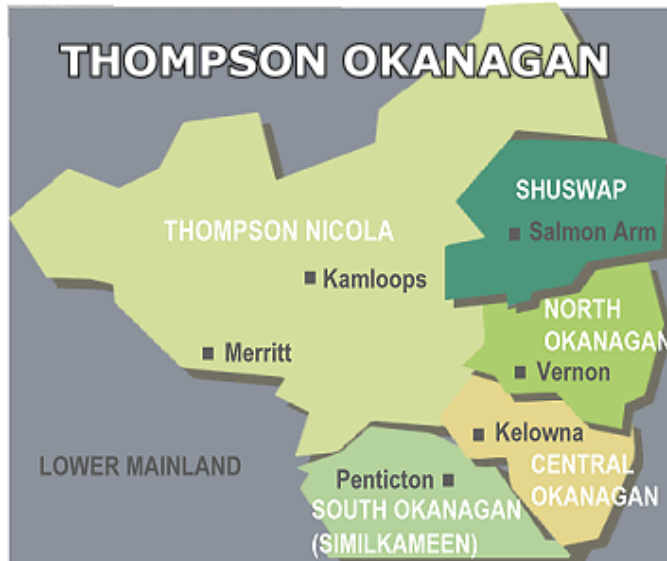
See: <http://www.bcstats.gov.bc.ca/statisticsbysubject/geography/referencemaps/Census.aspx>

Much of the health-related data, however, is representative of the Okanagan Health Service Delivery Area (HSDA), which includes: Southern Okanagan, Penticton, Keremeos, Princeton, Armstrong-Spallumcheen, Vernon, Central Okanagan, Summerland and Enderby.



See: <http://www.bcstats.gov.bc.ca/statisticsbysubject/geography/referencemaps/Health.aspx>

Most economic data is collected for the Thompson-Okanagan Economic Region, of which Kelowna CMA is part. Included in this economic region are: South Okanagan (Similkameen), Central Okanagan, North Okanagan, Shuswap, and Thompson Nicola.



See: http://www.bcvirtualtour.com/Thompson_Okanagan.html

<http://www.workbc.ca/Navigators/BCRegLabourOutlook#>

A village of 100: If the Central Okanagan was made up of 100 people, there would be...

In 2014, the population of the Kelowna Census Metropolitan Area (which includes the city of Kelowna, Lake Country, Peachland and West Kelowna) was 191,237. From 2014 through 2019, BC Stats projects a total population growth of 8.8% for the Central Okanagan. Most of this growth is projected to occur among our senior population, age 65 and over.

Interior Health. Local Health Area Profile: Central Okanagan 2014. Prepared by Emily Watt. Page 2.

Statistics Canada. Estimates of Population. Cansim Table 051-0034 and 051-0052 for CMAs and districts.

Life Expectancy at Birth (by gender)

Life expectancy is a summary measure used to gauge the overall health of a population by measuring the average lifespan of persons residing in a particular health region from birth. It varies between sexes, as women tend to live longer than men.

Interior Health Authority. Local Health Area Profile: Central Okanagan 2014. Prepared by Emily Watt. Pages 2-3.

BC Statistics. Central Okanagan Regional District. 2010-2014. Ministry of Technology, Innovation and Citizens' Services.

<http://www.bcstats.gov.bc.ca/StatisticsBySubject/Demography/VitalStatistics.aspx>

Age Demographics, Household and Family Dynamics, Languages Spoken at Home

Statistics Canada. 2012. Kelowna, British Columbia (Code 915) and British Columbia (Code 59) (table). Census Profile. 2011 Census. Statistics Canada Catalogue no. 98-316-XWE. Ottawa. Released October 24, 2012. <http://www12.statcan.gc.ca/census-recensement/2011/dp-pd/prof/index.cfm?Lang=E> (accessed July 15, 2015).

Nationality, Religion and Education

Statistics Canada. 2013. Kelowna, CMA, British Columbia (Code 915) (table). National Household Survey (NHS) Profile. 2011 National Household Survey. Statistics Canada Catalogue no. 99-004-XWE. Ottawa. Released September 11, 2013. <http://www12.statcan.gc.ca/nhs-enm/2011/dp-pd/prof/index.cfm?Lang=E> (accessed July 15, 2015).

Employment/Unemployment

*Population 15 years of age and over

Statistics Canada. Labour force characteristics, unadjusted, by census metropolitan area (3 month moving average). July 2015. CANSIM, table 282-0135 and Catalogue no. 71-001-XIE.

SECURE: YOUTH RESTORATIVE JUSTICE PROGRAM

MacDougall, Kevin. Community Police Coordinator, Rutland Office. 2015, March 25. Personal Interview.

MacKinnon, Sarah. Youth Restorative Justice Program Coordinator, Okanagan Boys and Girls Club. 2015, May. Personal correspondence.

Are we secure?

1. Overall crime rate down...but still relatively high

Statistics Canada. CANSIM Table 252-0051 for 1998-2013 CMA data. Data by police service are available by province (CANSIM Tables 252-0075 - 252-0082). Data are based on the Uniform Crime Reporting Survey.

2. Violent crime

The violent crime category has been expanded under the Incident-based Uniform Crime Reporting Survey (UCR2) to include a number of offences not previously included in the violent crime category, including uttering threats, criminal harassment and forcible confinement.

Statistics Canada. CANSIM Table 252-0051 for 1998-2013 CMA data. Data by police service are available by province (CANSIM Tables 252-0075 - 252-0082). Data are based on the Uniform Crime Reporting Survey.

3. Drop in youth crime

The youth crime rate is calculated as the number of youth (ages 12-17) charged per 100,000 persons.

Statistics Canada. CANSIM Table 252-0051. Based on Uniform Crime Reporting Survey.

4. Citizens feel safe

Ipsos Reid, *City of Kelowna 2015 Citizen Survey*, 30-32.

Online: http://apps.kelowna.ca/CityPage/Docs/PDFs/Communications/CitizenSurvey_2015.pdf

5. Property crime on the rise

Statistics Canada. CANSIM Table 252-0051 for 1998-2013 CMA data. Data by police service are available by province (CANSIM Tables 252-0075 - 252-0082). Data are based on the Uniform Crime Reporting Survey.

6. Did you know?

Statistics reflect property crime in the Kelowna Regional Detachment, which consists of Kelowna, West Kelowna, Lake Country and Peachland.

Letcher, Garth. Crime Prevention Supervisor, Kelowna RCMP. 2015, July 30. Personal Communication.

7. Fewer sexual assaults

The incident-based Uniform Crime Reporting (UCR2) Survey captures criminal incidents that have come to the attention of the police, which includes 4 different types of sexual offences as defined by the *Criminal Code*. The data in Vital Signs® reflects Sexual assault levels 1, 2 and 3.

Sexual assault level 1 (s.271): An assault committed in circumstances of a sexual nature such that the sexual integrity of the victim is violated. Level 1 involves minor physical injuries or no injuries to the victim.

Sexual assault level 2 (s.272): Sexual assault with a weapon, threats, or causing bodily harm.

Aggravated sexual assault (level 3): Sexual assault that results in wounding, maiming, disfiguring or endangering the life of the victim.

Statistics Canada. CANSIM Table 252-0051 for 1998-2013 CMA data. Data by police service are available by province (CANSIM Tables 252-0075 - 252-0082). Data are based on the Uniform Crime Reporting Survey.

Issue/Response: The Kelowna Women's Shelter and the Inside/Out program

Mason, Karen. Executive Director of the Kelowna Women's Shelter. 2015, July 7. Personal Communication.

HEALTHY: THE HEALTHY CITY PARTNERSHIP

Brown, Betty. Community Health Facilitator, Interior Health Authority. 2015, April 2. Personal Interview.

Culver, Keith. Director, Sustainability Institute. University of British Columbia, Okanagan. 2015, April 2. Personal Interview.

Hickey, Ross. Assistant Professor, Economics. University of British Columbia, Okanagan. 2015, May 20. Phone Interview.

Kam, Michelle. Sustainability Coordinator, City of Kelowna. 2015, May 14. Personal Interview.

Moore, Pam. Specialist, Environmental Health, Healthy Built Environment Program, Interior Health Authority. 2015, June 8. Personal Interview.

Steffler, Julie. Community Health Facilitator, Healthy Communities Initiative, Interior Health 2015, June 8. Personal Interview.

Are we healthy?

Health statistics are measured at the level of Health Region. The Okanagan Health Service Delivery Area includes Kelowna (CMA), Penticton (CA), and Vernon (CA). Data collection and reporting for The Okanagan Health Service Delivery Area is consistent with that cited in previous Vital Signs® reports, and thus allows for comparisons over time.

8. Physical activity remains high

Statistics Canada. Canadian Community Health Survey, Indicator Profile, for Canada, Provinces and Health Regions (2013 boundaries), CANSIM Table 105-0501.

9. We are more stressed

Perceived life stress, quite a lot is defined by Statistics Canada as the population aged 15 and over who reported perceiving that most days in their life were “quite a bit” or “extremely” stressful. Perceived life stress refers to the amounts of stress in the person's life, on most days, as perceived by the person, or, in the case of proxy response, by the person responding.

Statistics Canada. Canadian Community Health Survey, Indicator Profile, for Canada, Provinces and Health Regions, CANSIM Table 105-0501.

10. Mental health

Population aged 12 and over who reported their mental health as very good or excellent.

Statistics Canada. Canadian Community Health Survey (CCHS), Indicator Profile, for Canada, Provinces and Health Regions, CANSIM Table 105-0501.

11. Obesity and diabetes rates rise

Obesity refers to a self-reported body mass index of 30.0 or higher for adults 18 years and over.

Statistics Canada. Canadian Community Health Survey, Health Indicator Profile, annual estimates, by age group and sex, Canada, Provinces, territories, Health Regions (2013 boundaries) and peer groups, CANSIM Table 105-0501.

Diabetes data based on individuals in the population aged 12 and over who reported that they have been diagnosed by a health professional as having Type 1 or Type 2 diabetes. Diabetes includes females 15 and over who reported that they have been diagnosed with gestational diabetes.

Statistics Canada. Canadian Community Health Survey, Indicator Profile, for Canada, Provinces and Health Regions, CANSIM Table 105-0501.

12. More green buildings

In 2014, there were seven LEED-certified buildings in the City of Kelowna. Of these, there are three with gold-level certification, two with silver-level, and two with basic-level certification. Leadership in Energy and Environmental Design (LEED) is a rating system that is recognized as the international mark of excellence for green building in 150 countries. Since 2002, the Canada Green Building Council (CaGBC) and LEED Canada have been redefining the buildings and communities where Canadians live, work and learn. LEED works because it recognizes that sustainability should be at the heart of all buildings – in their design, construction and operation.

Source:

<http://www.cagbc.org/Content/NavigationMenu/Programs/LEED/ProjectProfilesandStats/default.htm>

13. Did you know?

Central Okanagan data for Bike to Work Week found in "Table 7: Bike to Work Week Six-Year Comparison Chart" (2010-2015).

The total tons of Greenhouse Gas emissions saved is calculated by total kilometers multiplied by 0.232 kilograms of CO₂ per kilometer, a median factor provided by Natural Resources Canada Fuel Consumption Guide for Vehicles. It is then divided by 1000 to convert to tons.

Kittmer, Michael. Active Transportation Coordinator, Regional Services, City of Kelowna. 2015, August 19. Personal Communication.

Issue/Response: Walk N' Talk for Your Life

Jones, Charlotte. Associate Professor of Medicine 2015, May 7. Personal Interview.

Percy, Chella. Community Research Facilitator, University of British Columbia Okanagan. 2015, May 7. Personal Interview.

SMART: THE PRIMARY KINDNESS PROJECT

Binfet, John-Tyler. Assistant Professor in the Faculty of Education, University of British Columbia Okanagan. 2015, April 2. Personal Interview.

Binfet, John-Tyler. *Young Students' Conceptualizations of Kindness: What Drawings Reveal About Themselves and Their Teachers*. Draft version of a paper submitted for publication.

Are we smart?

14. Increase in Aboriginal graduates yet completion rate relatively low

The Six-Year Completion rate is the percent of Grade 8 students who graduate with a Certificate of Graduation. It is not the inverse of a "dropout rate" as students may graduate after the six-year period.

School District 23 Central Okanagan, *Aboriginal Report 2009/10 - 2013/14: How Are We Doing?* November, 2014, p.29.

15. Post-secondary education

Statistics Canada, Labour Force Survey by Special Request.

16. Young children more vulnerable

The Early Development Instrument (EDI) is a population-level research tool that measures the vulnerability of children at kindergarten entry in five core areas that are known to be good

predictors of adult health, education and social outcomes: social competence, physical health and well-being, language and cognitive development, emotional maturity, communication skills and general knowledge.

EDI questionnaires are completed by kindergarten teachers from across British Columbia for all children in their classes. To ensure that teachers have adequate knowledge about their students and can make an informed assessment, questionnaires are filled out in February.

For a more detailed explanation of the EDI, visit: <http://earlylearning.ubc.ca/edi/>

The Human Early Learning Partnership. *Early Development Instrument, Waves 2-5*. 2013, October 10. Provincial Data; School District 23. Online: <http://earlylearning.ubc.ca/maps/data/>

17. Library use

Library statistics represent the following branches: Kelowna, Lake Country, Mission, Oyama, Peachland, Rutland, Westbank.

O'Brien, Marla. Public Relations/Fundraising Manager, Okanagan Regional Library. 2015, July 14. Personal Communication.

Issue/Response: Kelowna Child Care Society

Central Okanagan's Vital Signs® 2013, p 10. Online: http://www.centralokanaganfoundation.org/files/VitalSigns18_FinalproofALL_Oct7.pdf

Dickie, Michelle. Executive Director, Kelowna Child Care Society. Personal Communication.

CREATIVE: THE OKANAGAN CENTRE FOR INNOVATION

Fine, Robert. Director of Business and Entrepreneurial Development, City of Kelowna. 2015, May 8. Personal Interview.

Gauthier, Ken. Community Catalyst. 2015, May 13. Personal Interview.

Keen, Jeff. Director, Kelowna Innovation Society. 2015, May 12. Personal Interview.

Are we creative?

18. More employed in cultural industries

Data represents the Thompson-Okanagan Economic Region, of which Kelowna CMA is part.

Cultural Industries includes the following sub-industries from the Information and Cultural Industries (NAICS code 51) and Arts, Entertainment and Recreation (NAICS code 71): 511- Publishing, 512- Motion Picture and Video, 515- Broadcasting (except Internet), 516- Internet Publishing and Broadcasting, 711- Performing Arts, Spectator Sports and Related and 712- Heritage Institutions.

Statistics Canada, Labour Force Survey, Special Request.

19. Did you know?

Nagy, Nataley. Executive Director, Kelowna Art Gallery. 2015, March 24. Personal Communication.

20. Kelowna Art Gallery

Nagy, Nataley. Executive Director, Kelowna Art Gallery. 2015, March 24. Personal Communication.

21. artsVest™ Kelowna 2014-15

Results delivered by Kelowna Mayor, Colin Basran, at the artsVest™ Kelowna Wrap-up Event. 2015, June 18. Rotary Centre for the Arts, Kelowna, BC.

Results confirmed by Sandra Kochan, Cultural Services Manager, City of Kelowna. 2015, August 18. Personal Communication.

22. Arts and culture employment as percent of total industries

“Number of Artists” defined as Occupation 513: Creative and Performing Artists (5131: Producers, directors, choreographers and related occupations, 5132: Conductors, composers, and arrangers, 5133: Musicians and singers, 5134: Dancers, 5315: Actors and Comedians and 5136: Painters, sculptors and other visual artists)

23. Lake Country Art Gallery 2014/15

Statistics are based on an average of the 2014 and 2015 to date numbers.

McCoubrey, Sharon. President, Lake Country Art Gallery Society. 2015, July 17. Personal Communication.

24. Fun fact

Statistics Canada, Census 2001 and 2006, Community Profiles. 2011: National Household Survey Profiles. Data are for the Census reference week.

25. Ballet Kelowna 2014/15 Season

Caldi, Hope. Communications and Development Coordinator, Ballet Kelowna. 2015, July 7. Personal Communication.

Orlando, Simone. Chief Executive Officer, Ballet Kelowna. 2015, July 6. Personal Communication.

Issue/Response: Pianos in Parks

Mills, Renata. Executive Director, Festivals Kelowna. 2015, June 22. Personal Interview.

CONNECTED: TRADITIONAL CANOE PROJECT

Blais, Daniel. Directeur, École de l'Anse-au-sable. 2015, June 26. Personal Interview.

Louis, Richard. 2015, June 20. Personal Interview.

Savoie, Jean. Aboriginal Coordinator, École de l'Anse-au-sable. 2015, June 26. Personal Interview.

Whalen, Corey. 2015, March 30. Personal Interview.

Whalen, Tania. 2015, March 30. Personal Interview.

Are we connected?

26. Weakened sense of belonging

Statistics Canada. Canadian Community Health Survey (CCHS), Indicator Profile, for Canada, Provinces and Health Regions, CANSIM Table 105-0501.

27. We give generously

Median Charitable Donations based on the amount declared on line 340 of the income tax form.

Statistics Canada, Financial Data and Charitable Donations data collected by CRA, Table 111-0001.

28. Connecting neighbours

Roberts, Louise. Manager of Community & Neighbourhood Services, City of Kelowna. 2015, March 9. Personal Interview.

29. Connecting cultures

Issac, Anthony. Aboriginal Access and Services Coordinator, Okanagan College. Personal Communication. 2015, August 19. Personal Communication.

30. Voter Turnout Mixed

Municipal election data – detailed breakdown:

Lake Country: 2008 (16%); 2011 (29%); 2014 (24%)

Kelowna: 2008 (22%); 2011 (33%); 2014 (30.3%)

Peachland: 2008 (46%); 2011 (39%); 2014 (42%)

West Kelowna: 2008 (41%); 2011 (26%); 2014 (32%)

Civic Info BC. Accessed online June 29, 2015.

2014: <http://www.election2014.civicinfo.bc.ca/2014/index2.asp>

2011: <http://www.elections.civicinfo.bc.ca/2011/>

2008: <http://www.elections.civicinfo.bc.ca/2008/reports/index2.asp>

31. We volunteer

Statistics Canada. CANSIM Table 119-0009. Volunteer rate and distribution of volunteer hours, by age group, Canada, provinces, occasional (percent unless otherwise noted).

32. Did you know?

Peachland Wellness Centre Evaluation Committee, *Peachland Wellness Centre 2014 Evaluation Report*, February 15, 2015. Contributions from volunteers include assistance to staff, facility and yard maintenance, program development and delivery, outreach services, and board governance.

33. High Life Satisfaction

Population aged 12 and over who reported being satisfied or very satisfied with their life in general.

Statistics Canada. Canadian Community Health Survey (CCHS), Indicator Profile, for Canada, Provinces and Health Regions, CANSIM Table 105-0501.

Issue/Response: The Okanagan Young Professionals Collective

Vincent, Drew. Manager, Okanagan Young Professionals Collective. 2015, June 29. Personal Interview.

Okanagan Young Professionals Collective, Community Project Award Entry to the Economic Development Association of BC, 2015.